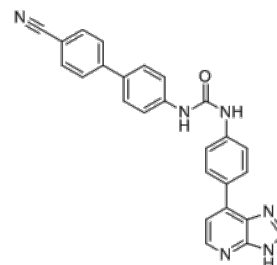


Product Name : ML368
Cat. No. : PC-62112
CAS No. : 1361414-26-7
Molecular Formula : C₂₆H₁₈N₆O
Molecular Weight : 430.5
Target : Cytochrome P450 (CYPs)
Solubility : 10 mM in DMSO



Biological Activity

ML368 (SR9186) is a potent, selective cytochrome P450 enzyme **CYP3A4** inhibitor with IC₅₀ of 4 nM (convert testosterone to hydroxytestosterone), displays >2,000-fold selectivity over CYP3A5.

References

- Li X, et al. *Drug Metab Dispos.* 2012 Sep;40(9):1803-9.
Towles JK, et al. *Drug Metab Dispos.* 2016 Oct;44(10):1584-97.

Caution: Product has not been fully validated for medical applications. Lab Use Only!

E-mail: tech@probechem.com